

ANCHORIDGE



your safehaven armstrong creek



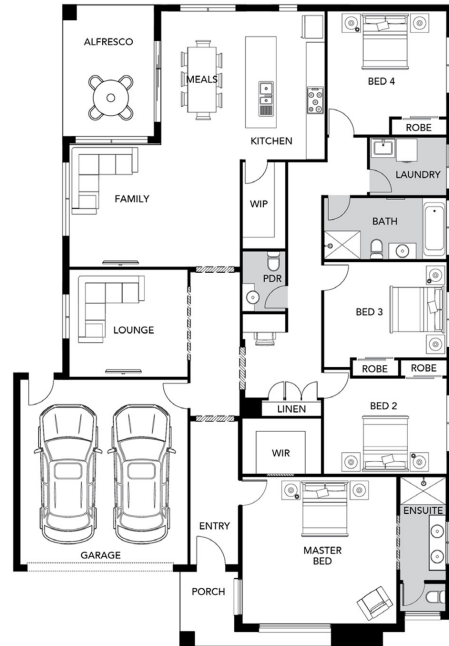
THE UNION MAINE

Soho Living

4 BED 2 BATH 2 CAR

\$841,087

2590MM CEILING HEIGHTS TO GROUND FLOOR
20MM STONE BENCHTOP TO ENSUITE AND BATHROOM
MIRRORED SPLASHBACK TO KITCHEN
LED DOWNLIGHTS, HEATING AND COOLING
COLOURED CONCRETE DRIVEWAY AND FRONT PATH
FLOORING TIMBER LAMINATE AND CARPET
TILED SHOWER BASES
COLORBOND SECTIONAL GARAGE DOOR WITH DUEL REMOTES
ENSUITE, BATHROOM AND TOILET ACCESSORIES
SLIDING ROBE DOORS
ROLLER BLINDS AND FLYSCREENS



THIS PUBLICATION IS FOR INFORMATION PURPOSES ONLY AND IS INTENDED TO BE GENERAL IN NATURE. ALL IMAGES, ILLUSTRATIONS AND RENDERS ARE FOR PRESENTATION PURPOSES, ARE NOT ACTUAL IMAGES OF THE DEVELOPMENT AND ARE INTENDED TO BE INDICATIVE ONLY. EVERY CARE IS TAKEN TO ENSURE INFORMATION CONTAINED IN THIS PUBLICATION IS ACCURATE AT THE DATE OF PRINTING, HOWEVER ANCHORIDGE CANNOT GUARANTEE ITS ACCURACY AFTER THAT TIME. PROSPECTIVE PURCHASERS SHOULD CAREFULLY REVIEW ANY CONTRACT OF SALE, ENDORSED PLANS, MAKE THEIR OWN ENQUIRIES AND OBTAIN INDEPENDENT ADVICE BEFORE PROCEEDING. THE LOT SIZES, LAYOUT AND MEANS OF ACCESS MAY CHANGE WITHOUT NOTICE. THE DEVELOPER AND RPM REAL ESTATE GROUP RESERVES THE RIGHT TO WITHDRAW OR ALTER ANY LOT OR STAGE LAYOUT AT ANY TIME AT ITS ABSOLUTE DISCRETION.

Proudly developed by:



Selling agent:

