

ANCHORIDGE



your safehaven armstrong creek



THE WOODHAVEN

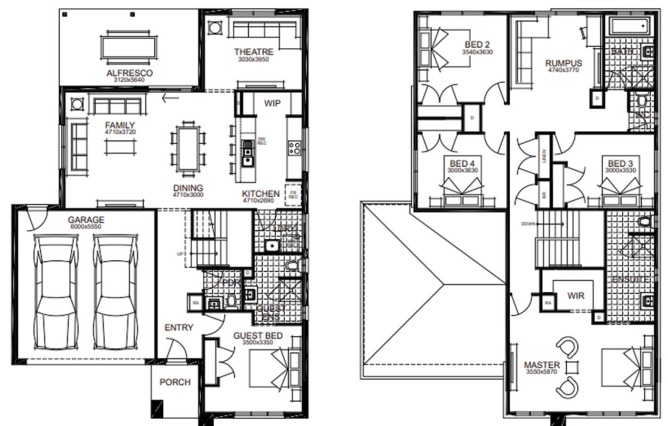
32_299 SARATOGA

Simonds Homes

5 BED 3 BATH 2 CAR

\$851,236

- DEVELOPER & COUNCIL REQ'S
- FLOORING THROUGHOUT
- 20MM CAESARSTONE BENCHTOP TO KITCHEN
- OVERHEAD CUPBOARDS TO KITCHEN
- 20 LED DOWNLIGHTS
- BRICKWORK OVER WINDOWS
- 900MM APPLIANCES
- DISHWASHER
- TOWEL RAILS & TOILET ROLL HOLDERS
- REMOTE TO GARAGE DOOR



THIS PUBLICATION IS FOR INFORMATION PURPOSES ONLY AND IS INTENDED TO BE GENERAL IN NATURE. ALL IMAGES, ILLUSTRATIONS AND RENDERS ARE FOR PRESENTATION PURPOSES, ARE NOT ACTUAL IMAGES OF THE DEVELOPMENT AND ARE INTENDED TO BE INDICATIVE ONLY. EVERY CARE IS TAKEN TO ENSURE INFORMATION CONTAINED IN THIS PUBLICATION IS ACCURATE AT THE DATE OF PRINTING, HOWEVER ANCHORIDGE CANNOT GUARANTEE ITS ACCURACY AFTER THAT TIME. PROSPECTIVE PURCHASERS SHOULD CAREFULLY REVIEW ANY CONTRACT OF SALE, ENDORSED PLANS, MAKE THEIR OWN ENQUIRIES AND OBTAIN INDEPENDENT ADVICE BEFORE PROCEEDING. THE LOT SIZES, LAYOUT AND MEANS OF ACCESS MAY CHANGE WITHOUT NOTICE. THE DEVELOPER AND RPM REAL ESTATE GROUP RESERVES THE RIGHT TO WITHDRAW OR ALTER ANY LOT OR STAGE LAYOUT AT ANY TIME AT ITS ABSOLUTE DISCRETION.

Proudly developed by:



Selling agent:

