

# ANCHORIDGE

your safehaven armstrong creek



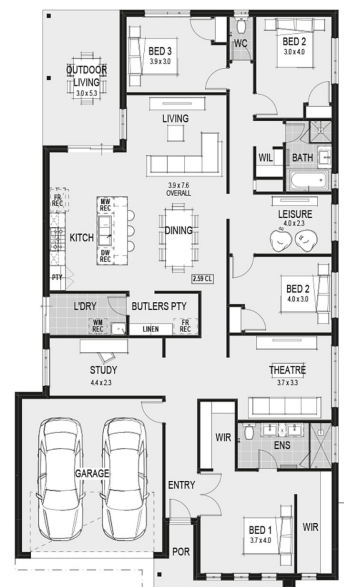
## THE PARIS 28

Home Group

4 BED 2 BATH 2 CAR

\$847,880

HUGE 1200MM WIDE ISLAND BENCH WITH BREAKFAST BAR  
STONE BENCHTOPS  
EUROPEAN HIGH GLOSS CABINETRY  
EUROPEAN HIGH GLOSS PANTRY  
LIFT UP OVERHEAD CUPBOARDS  
EXTENSIVE POT DRAWERS  
900MM FREESTANDING STOVE  
INTEGRATED RANGEHOOD  
MICROWAVE RECESS WITH POT DRAWER  
DISHWASHER RECESS  
INTEGRATED CUTLERY DRAWER



THIS PUBLICATION IS FOR INFORMATION PURPOSES ONLY AND IS INTENDED TO BE GENERAL IN NATURE. ALL IMAGES, ILLUSTRATIONS AND RENDERS ARE FOR PRESENTATION PURPOSES, ARE NOT ACTUAL IMAGES OF THE DEVELOPMENT AND ARE INTENDED TO BE INDICATIVE ONLY. EVERY CARE IS TAKEN TO ENSURE INFORMATION CONTAINED IN THIS PUBLICATION IS ACCURATE AT THE DATE OF PRINTING, HOWEVER ANCHORIDGE CANNOT GUARANTEE ITS ACCURACY AFTER THAT TIME. PROSPECTIVE PURCHASERS SHOULD CAREFULLY REVIEW ANY CONTRACT OF SALE, ENDORSED PLANS, MAKE THEIR OWN ENQUIRIES AND OBTAIN INDEPENDENT ADVICE BEFORE PROCEEDING. THE LOT SIZES, LAYOUT AND MEANS OF ACCESS MAY CHANGE WITHOUT NOTICE. THE DEVELOPER AND RPM REAL ESTATE GROUP RESERVES THE RIGHT TO WITHDRAW OR ALTER ANY LOT OR STAGE LAYOUT AT ANY TIME AT ITS ABSOLUTE DISCRETION.

Proudly developed by:



Selling agent:

