

# ANCHORIDGE



your safehaven armstrong creek



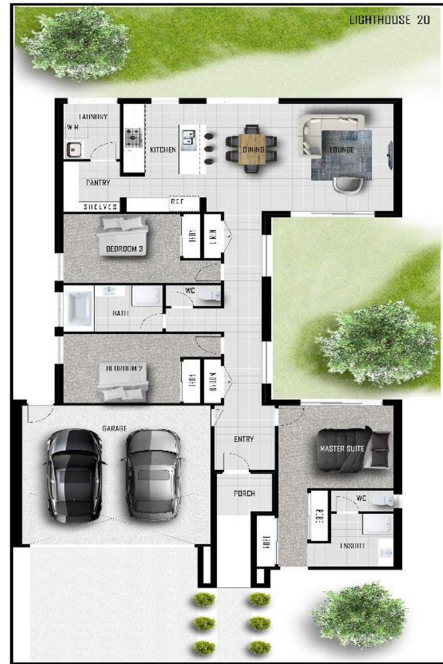
## THE LIGHTHOUSE 20

JOANNE  
Enso Homes

3 BED 2 BATH 2 CAR

\$492,500

- FIXED SITE COSTS
- DEVELOPER, BAL 12.5 AND COUNCIL REQUIREMENTS.
- 3RD PARTY INDEPENDENT BUILDING INSPECTIONS AT CONSTRUCTION.
- 3 MONTH MAINTENANCE PERIOD.
- 25 YEAR STRUCTURAL WARRANTY.
- BRICK INFILLS OVER ALL WINDOWS AND DOORS.
- 2590MM CEILING HEIGHT
- 3 COAT PAINT SYSTEM TO WALLS AND CEILING.
- REMOTE CONTROL TO GARAGE.
- ROLLER BLINDS THROUGHOUT.



THIS PUBLICATION IS FOR INFORMATION PURPOSES ONLY AND IS INTENDED TO BE GENERAL IN NATURE. ALL IMAGES, ILLUSTRATIONS AND RENDERS ARE FOR PRESENTATION PURPOSES, ARE NOT ACTUAL IMAGES OF THE DEVELOPMENT AND ARE INTENDED TO BE INDICATIVE ONLY. EVERY CARE IS TAKEN TO ENSURE INFORMATION CONTAINED IN THIS PUBLICATION IS ACCURATE AT THE DATE OF PRINTING, HOWEVER ANCHORIDGE CANNOT GUARANTEE ITS ACCURACY AFTER THAT TIME. PROSPECTIVE PURCHASERS SHOULD CAREFULLY REVIEW ANY CONTRACT OF SALE, ENDORSED PLANS, MAKE THEIR OWN ENQUIRIES AND OBTAIN INDEPENDENT ADVICE BEFORE PROCEEDING. THE LOT SIZES, LAYOUT AND MEANS OF ACCESS MAY CHANGE WITHOUT NOTICE. THE DEVELOPER AND RPM REAL ESTATE GROUP RESERVES THE RIGHT TO WITHDRAW OR ALTER ANY LOT OR STAGE LAYOUT AT ANY TIME AT ITS ABSOLUTE DISCRETION.

Proudly developed by:



Selling agent:

