

ANCHORIDGE



your safehaven armstrong creek



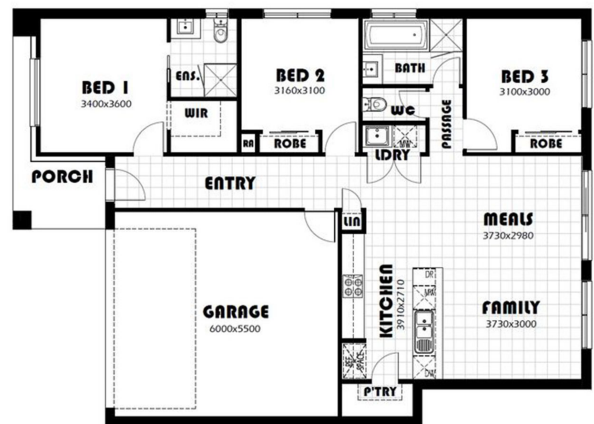
THE H&L VICTORIA

H&L victoria

3 BED 2 BATH 2 CAR

\$442,990

- CARPET & TILE FLOORING
- COLOURED CONCRETE DRIVEWAY
- 2590MM CEILING HEIGHTS
- 20MM STONE BENCHTOPS TO KITCHEN
- LED DOWNLIGHTS
- SLIDING DOORS TO WARDROBES
- BRICK ABOVE WINDOWS
- REMOTE CONTROL GARAGE
- SITE COSTS BASED ON H CLASS SLAB
- COUNCIL REQUIREMENTS
- FRONT & REAR LANDSCAPING
- CLOTHES LINE AND LETTER BOX
- SPLIT SYSTEM AC
- HOLLAND BLINDS



THIS PUBLICATION IS FOR INFORMATION PURPOSES ONLY AND IS INTENDED TO BE GENERAL IN NATURE. ALL IMAGES, ILLUSTRATIONS AND RENDERS ARE FOR PRESENTATION PURPOSES, ARE NOT ACTUAL IMAGES OF THE DEVELOPMENT AND ARE INTENDED TO BE INDICATIVE ONLY. EVERY CARE IS TAKEN TO ENSURE INFORMATION CONTAINED IN THIS PUBLICATION IS ACCURATE AT THE DATE OF PRINTING, HOWEVER ANCHORIDGE CANNOT GUARANTEE ITS ACCURACY AFTER THAT TIME. PROSPECTIVE PURCHASERS SHOULD CAREFULLY REVIEW ANY CONTRACT OF SALE, ENDORSED PLANS, MAKE THEIR OWN ENQUIRIES AND OBTAIN INDEPENDENT ADVICE BEFORE PROCEEDING. THE LOT SIZES, LAYOUT AND MEANS OF ACCESS MAY CHANGE WITHOUT NOTICE. THE DEVELOPER AND RPM REAL ESTATE GROUP RESERVES THE RIGHT TO WITHDRAW OR ALTER ANY LOT OR STAGE LAYOUT AT ANY TIME AT ITS ABSOLUTE DISCRETION.

Proudly developed by:



Selling agent:

